



ಶ್ರೀ ದೇವರಾಜ್ ಅರಸ್ ವಿದ್ಯಾನಂಥ (ರಿ.)

ಫೋನ್ : 08192

ಎ. ಆರ್. ಎಂ. ಪ್ರಥಮ ದರ್ಜೆ ಕಾಲೇಜು

ಎಸ್. ನಿಜಲಿಂಗಪ್ಪ ಲೇಔಟ್, ದಾವಣಗೆರೆ-577 004, ಕರ್ನಾಟಕ ರಾಜ್ಯ.

A. R. M. FIRST GRADE COLLEGE

S. Nijalingappa Layout, DAVANGERE-577004, Karnataka State.

E-mail : armfgc.dvg@gmail.com

Web : www.armfgc.org

Volume - 5 | Issue - 6 | March - 2016

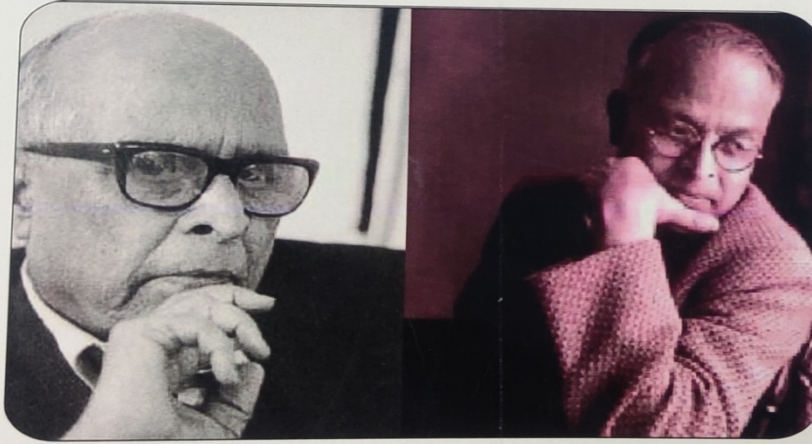
REVIEW OF RESEARCH

International Recognition Multidisciplinary Research Journal

Impact Factor
3.1402(UIF)

ISSN
2249-894X

MODERNISM IN R K NARAYANA'S NOVEL THE GUIDE



Manohar. S. B

Manohar S. B

Assistant Professor of English A R M First Grade College S. Nijalingappa Layout Davangere, Karnataka.

ABSTRACT:- The main aim of this study of R. K. Narayan's The Guide is to analysis is based on the observation of the social structures revealed in this novel. It is very often observed that a writer knowingly or unknowingly portrays characters against a particular. ...Page No - 63

Editor - In - Chief - Ashok Yakkaldevi

International Online Multidisciplinary Journal
REVIEW OF RESEARCH
ISSN NO: 2249-894X

Review of Research (ROR) Journal is an Online International Multidisciplinary Research Journal, published monthly in English, Hindi & Marathi Language. All research papers submitted to the journal will be double-blind peer reviewed referred by members of the Editorial Board. Readers will include investigator in universities, research institutes government and industry with research interest in the general subjects.

OUR CHIEF EDITORS

India



Ashok
Yakkaldevi

Iran



Bijan
Goodarzi

Bucharest



Ecaterina
Patrascu

Sri-lanka



Kamani
Perera

Associated and Indexed, India

- OPEN-J-GATE
- International Scientific Journal Consortium Scientific
- Google Scholar
- DOAJ
- EBSCO
- Index Copernicus
- Academic Journal Database
- Publication Index
- Scientific Research Database
- Recent Science Index
- Scholarly Journals Index
- Directory of Academic Resources
- Elite Scientific Journals Archive
- Current Index to Scholarly Journals
- Digital Journal Database
- Contemporary Research Index
- Mercyhurst University
- Western Technological Seminary, Holland
- Washington University

Advisory Board

Rajendra Shendge
Director, B.C.U.D. Solapur University, Solapur

Fabricio Moraes de Almeida
Federal University of Rondonia, Brazil

Ecaterina Patrascu
Spiru Haret University, Bucharest

Kamani Perera
Regional Centre For Strategic Studies, Sri Lanka

Catalina Neculai
University of Coventry, UK

Anna Maria Constantinovici
AL. I. Cuza University, Romania

Romona Mihaila
Spiru Haret University, Romania

Delia Serbescu
Spiru Haret University, Bucharest, Romania

Xiaohua Yang
University of San Francisco, San Francisco

Karina Xavier
Massachusetts Institute of Technology (MIT), USA

May Hongmei Gao
Kennesaw State University, USA

Marc Fetscherin
Rollins College, USA

Liu Chen
Beijing Foreign Studies University, China

Mabel Miao
Center for China and Globalization, China

Ruth Wolf
University Walla, Israel

Jie Hao
University of Sydney, Australia

Pei-Shan Kao Andrea
University of Essex, United Kingdom

Osmar Siena
Brazil

S.Parvathi Devi
(Assoc.Prof Research Co-Ordinator)
K.L.University

Nimita Khanna
Director, Isara Institute of Management, New Delhi

Salve R. N.
Department of Sociology, Shivaji University, Kolhapur

P. Malyadri
Government Degree College, Tandur, A.P.

S. D. Sindkhedkar
P Mandal's Arts, Science and Commerce College.

George - Calin SERITAN
Postdoctoral Researcher
Faculty of Philosophy and Socio-Political Sciences
Al. I. Cuza University, Iasi

R. Muthu
Annamalai University ,
Annamalai Nagar,TN

kavya basavanna
Lecturer in English,Govt.Pre-University College
Gabbur, Deodurga Taluk Raichur.

Bhalchandra Deshmukh
Asst .Prof.G.N.Azad College of Soical Work
Pusad Dist.Yavatmal

Bhaskar Koshidgewar
Vai. Dhunda Maharaj College,
Degloor.Dt. Nanded. 431717

Jadal M.M
Karmaveer Bhaurao Patil Mahavidyalaya,
Pandharpur

H.M.Kasinath
Dean,Faculty Of Education,
Karnatak University,Dharwad

V.V.Malagi
Dean & chairman,Dept of Education,
Karnataka State Womens University Bijapur

Baiju Abraham
Assistant Professor ,
Lucknow Christian Degree College, Lucknow

Reza Kafipour
Shiraz University of Medical Sciences Shiraz, Iran

Devidas B. Waydande
Department of History,
M. S. Kakade College,Someshwarnagr

Santos Pundalik Rajguru
Rayat Shikshan Sanstha's
Laxmibai Bhaurao Patil Mahila Mahavidyalaya,Solapur.

Bhavana vivek patole
PhD, Elphinstone college mumbai-32

Awadhesh Kumar Shirotriya
Secretary, Play India Play (Trust),Meerut (U.P.)

Maj. Dr. S. Bakhtiar Choudhary
Director,Hyderabad AP India.

Ar. Saravanakumar
Alagappa University, Karaikudi,Tn

V.Mahalakshmi
Dean, Panimalar Engineering College

More....

BOOK
PUBLISH
at
U.S.A.



THESIS
DISSERTATION
PROJECT
CONVERT
INTO
BOOK



LAXMI
BOOK PUBLICATION, Solapur
Ph.: 0217-2372010 / +91-9595-359-435
Email.: ayisrj2011@gmail.com
Website.: www.lsrj.in



Sr. No	Title And Name Of The Author (S)	Page No
1	Buchi Emecheta's Works As A Tale Of Misery Dhaygude Kakasaheb D.	1
2	Effect Of Regular Physical Activity To Enhance Physical Fitness Among Athlete And Non-Athlete - An Experimental Study. Arun M. N.	5
3	A Review Of Drip Irrigation In Vegetable Production Narayanaswamy.T , Bharati C Mirajkar , Anandakumar B. M and A.S.Kamble	12
4	Abundance And Conservation Of Avian Population From Hingani Dam, Barshi -Taluka, Dist- Solapur , (M.S) Anil B. Devkar, P. S. Talwad and K. R. Rao	20
5	Yalahanka Nadaprabhus Achievements And Cultural Contribution (1418-Ad 1728 Ad) Manjula B.Chincoli and Saritabai sharanappa	25
6	An Analytical Study Of Architecture Of The Vyaghrapadesvarar Temple At Siddhalingamadam M. Dhanasekaran	29

7	Effectiveness Of Concept Mapping Strategy Of Teaching Science On Problem Solving Ability Of Secondary School Students Koppad Vanishree Totappa and Umme Kulsum	33
8	A Study Of Menat Health And Depression Among Alcoholic And Non-Alcoholic Persons Kalamb Prabodhan B. and S. E. Raypure	39
9	Education And Social-Economic Status. Shakera Banu and Surekha Kshreesagar	43
10	Menace Of Unsafe Food And Its Safety Laws In India Pranay R. Malviya	48
11	A Comparative Study Of Pre-Competition Anxiety And Sports Achievement Motivation Among Indigenous And Non Indigenous Game Players Of Karnatak University Sukashant S Patil and Shashidhara A Kellur	53
12	To Study Of Relationship Between Emotional Intelligence And Depression Among College Students Of Karad Prakash B. Darure	58
13	Modernism In R K Narayana's Novel The Guide Manohar. S. B	63
14	A Study Of Male And Female Literacy –Tahsilwise Analysis In West Khandesh Region Of Maharashtra State. B. D. Patil	67

Review of Research

International Online Multidisciplinary Journal

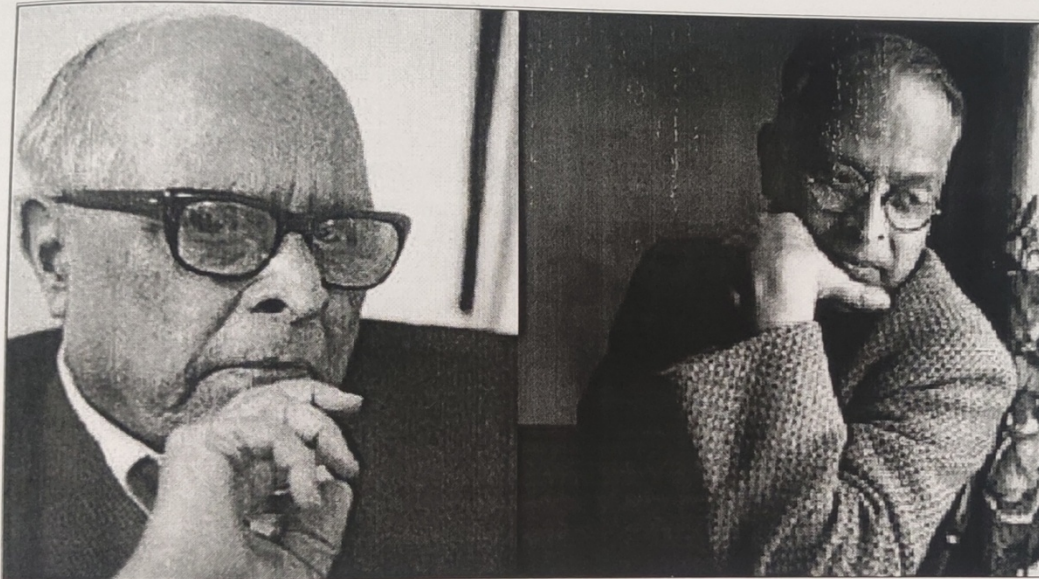
ISSN: 2249-894X

Impact Factor : 3.1402(UIF)

Volume - 5 | Issue - 6 | March - 2016



MODERNISM IN R K NARAYANA'S NOVEL THE GUIDE



Manohar. S. B

Assistant Professor of English A R M First Grade College
S. Nijalingappa Layout Davangere, Karnataka.

ABSTRACT :

The main aim of this study of R. K. Narayan's *The Guide* is to analysis is based on the observation of the social structures revealed in this novel. It is very often observed that a writer knowingly or unknowingly portrays characters against a particular social environment or background. The work of writer usually represents the picture of that society against the local setting, where his novels or his works are set. The idea, belief and aspirations of the people are represented modern ideas by the writer through the media of his characters. Therefore it is not irrelevant to study a particular character against its social and cultural background.

KEY WORDS:- particular social environment , novels , social and cultural background

INTRODUCTION:

R K Narayan's novel *The Guide* appeared in 1958. Its plot is again set in and around Malgudi. This paper proposes to examine the modernistic quality found in the novel. *The Guide* (1958), a Sahitya Akademi Award winner novel (1960) is Narayan's tour de force not only for its artistic excellence but also for its popular modernistic appeal. Narayan also as a chance to see modernistic life led by central characters of the novel. The story pass through farmer agricultural to an industrial economy and he uses the setting to make it sense as an authentic background for the different phases the characters goes through.

Modernism is a complex and diverse movement in the arts that provided great Renaissance of the 20th century, most of the revolutionary works of modernism belong to the second and Third decades of the century. This movement developed by many issues and many important prominent figures. English literature produced during Victorian and later Victorian period was patently minor when compare to the vast literature produced during the modernist movement. The Victorian literature had its own influence and significances in the literature during the own influence and significances in the literature during the 20th centuries devoted from it. This devotion may be compared to a river enriched by many streams and the modernist era begins from 1900.

R K Narayan born in 1907 in Madars, his thoughts, feelings the stirring of the soul, the way word movements of the consciousness are all of the soil of India. He is one of the few writers in India who take their craft seriously, constantly striving to improve the instrument pursuing with sense of dedication what may often seem to be the mirage of technical perfection.

In *The Guide* author gives us a chance to see them pass through from agricultural to an industrial economy and he uses the setting to make it serve as an authentic background for the different phases the characters of through. The central character of the novel Raju himself passes as it were from a state of innocence to a state of experience.

Like some modern novels does aim exploring the hollowness of modern life and modern mechanism of the day today life of middle class society in Indian scenario and Narayan subjugate the individual to the omnipotent social mechanism and the so called central character in the novel Raju is more drawn to free choice ultimately transforming him from and ordinary man into a saintly reform of mankind, though his action are not always guided by any religious and anti religious implication his transformation take place under circumstance beyond his control. The central character's worldly life in its different angles, colours and shades of feelings is expressed in the early phase of this novel while his quest in a situation over which he has almost no control is highlighted by the novelist in the later part of the story.

Narayan's *The Guide* echoes the pursuit of material pleasure in the shape of the attachments the real attachment of Raju with the charming and sensitive dancer lady Rosie, he experiences joys and sorrows in quick succession but ultimately his degeneration creates in him intense mental conflict suffering, it is also common aspect of the modernist behaviours and creates in him intense mental conflicts and suffering, it is also common aspects of the modernists behaviours and mannerism showed by Narayan through the important character of the novel.

Raju, the son of the a petty burger at the railway station who sells peppermint, fruits, tobacco etc then comes to have own his father death he develops to selling different types of books corner of India for sightseeing soon Raju became famous 'Railway Raju' hired by tourists to Mempi hills and caves.

While working as tourist guide comes to contact with elegant Roise, she has been educated taken M A Economics degree and also married rich and scholarly man whose interest on painting of

ancient art. Husband and wife have opposite nature make utilize by the tourist guide Raju, Roise has passion for dancing, the Raju falling in love with Roise, he also support to arouses her latent passion, become love's prey, Raju suffering from a mental agony shattering the peace of his mind and feelings. Raju's caring mother disapproving of her son's dark relationship with dancing girl, soon she leaves the house with her brother, then Raju pay more attention to Roise not for his business and their himself into the physical relationship with Roise.

Then the material prosperity and the fortune occupy his attention. Now Raju arranges dance programmes for Roise, he adopts the name 'Nalini'. As a dancer Roise famous high-up in the sky with cash flowing into Raju, suddenly Raju and Roise move to new splendid house at new extension, then Raju finding enjoys the satisfaction showing way of life opulent with money, praise, dances, music, luxury and conflict Raju involved in the playing cards with big friends circle in room when there is the profuse supply of tea, coffee, food and alcoholic drinks. Then husband of Roise Macro's book on the cultural history has come out of the press after some days Raju is arrested on a complaint from Macro on the change of forgery for his fake signing of Roise. Roise lets him know that she may go back to her husband; Raju is sentenced to two years imprisonment, thus his degeneration is caused by his purist of material pleasures.

There is a clash of caste, classes and interests in the persistence of time honour customs and the old values on the other hand and the weakening modern social and moral structure on the other hand. All this completely realised in terms of interactions of characters like Marco, Roise and Raju but roise lost interest in dance, when it was commercialised by raju because of he was an adventurer and all his talk of art and love for her proved to be so hollow and insincere in the light of the sordid use to which he had put Roise's talent.

Narayan shows admirable freedom from convention in the portrayal of Roise and their is in Macro a singleness of purpose and the fulfilment of not a very lendable objective, without a human centre study of the dead past cannot enrich the life of the present, so it has blinded him to present that to involving the research of hill and cave of the past ancient culture of the land. So Narayan shows him as wicked in the novel, he mistakes the means for the end forgets the main streams of life in his anxiety to belong to a tributary, but for the case of Raju is different when he utilizes the time and situation became commercialized his mind gaming and became rich and complex life.

When Raju comes out of jail he take s refuge in a temple situate in remote place, sitting on a stone slab near village temple with philosophical weariness and preoccupied with problem of so we how dragging his life by solving Velan's problem with his daughters, he gradually earns respected of the ignorant villagers they consider and made him a holy ma. Raju soon realised that his spiritual status to be enhance to earn of daily bread, so he starts grew a bread and long hair to full and his nape for a clean shaven. The villagers also started bringing so many things for him that he lost interest in accumulation so more respect an important stage in the making of the Mahatma. The next stage in the growth of the swami came when the rains failed and summer beaten up plants, animals, withering. The dreadful situation the holy man Raju is expected to endure the ordeal of standing keep-deep in water for two weeks and utter lines of prayer to bring down rain on earth. His penance successful, the Guide to the life of desire and lust is now transformed into a man eager to court suffering for alleviating the misery of the large humanity.

According to M. K. Naik:

R. K. Narayan chief contribution to Indian English fiction is twofold, First he has created a tiny but perfectly credible universal in Malgudi, which is the same class as Hardy's Wessex and Faulkner's

Yoknapatawpta and he has filled it with men and women, who are as real to us as the people actually around us, secondly an eagle-eyed observer of life and human nature he has illuminates the basic ironies, deep-seated ambiguities and existential dilemmas of the human condition.

Ved Mehta mentions:

R. K. Narayan manages by a mired of perception and choice of details of convey the Indian without a single false feelings or gesture.

R. K. Narayan has blunt both the classical and romantic elements in his narrative structures he faithful describes society as it is found with critic on it, but in process of representation he does not forget keeping init a new thought of life here there is both ethical and esthetical combination in his writing. It has been recognized how modernism has been injunction during the ethical periods of Indian Renaissance.

Conclusion :

In the novel The guide the main characters are depicting the modernist elements the hero Raju belongs to society with many traditions and great cultural diversity but he goes an implement the modernist elements in his life that may e break down the traditional values, moral aspects desires for physical love disturbed the traditional family rejection of parental relationship and involve in illegal activity by making the forgery than he became a saint of the shake for the fear of self in discovery society and also how the morality in society is by dealing false worshiping the personality as a godly man and it's also a combination of sincerity one hand and self depiction on the other, Another they we find there is not ethical ground for both characters Raju and Roise even Roise belongs to the traditional family and married women ready to reject husband and wife relationship and ready to disturbed the other family relations because of the self motive of fame and name .

Bibliography

1. Abrams M. H. (2004) A Glossary of Literary Terms (Seventh edition), Singapore, Thomason Asia Pvt Ltd.
2. Narayan R.K. (2008) The Guide. Chennai Indian Thought. Publication.
3. Srinath. C.N R. K. Narayan,(2000) An Anthology of recent Criticism, New Delhi, Pen Craft International
4. Naik. M. K. And Shyamal (2001) A Indian English literature 1960-2000. A Critical Survey, Delhi, Pen Craft International.

Pooja S. S.
Co-ordinator
Internal Quality Assurance Cell (IQAC)
A.R.M. First Grade College,
S.N. Layout, Davanagere-577 004.



Pooja S. S.
PRINCIPAL
A.R.M. First Grade College
S. Nijalingappa Layout,
DAVANGERE-577004.